

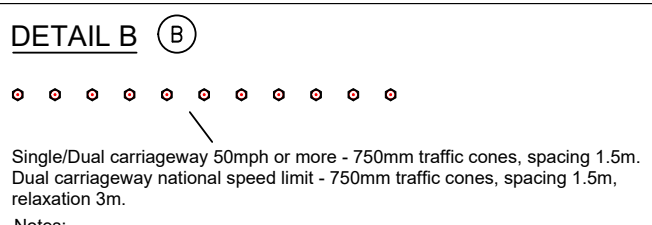
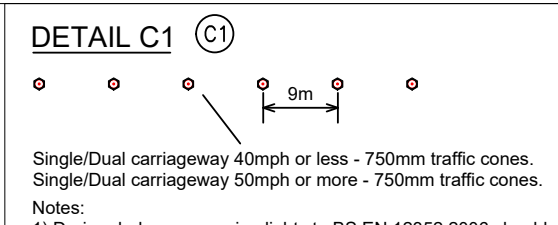
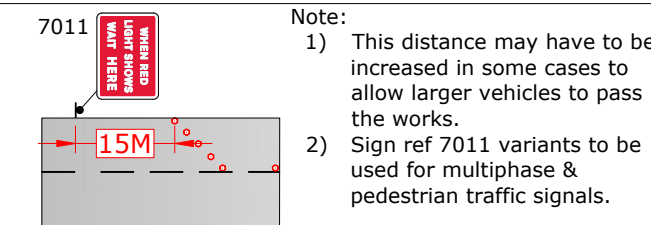
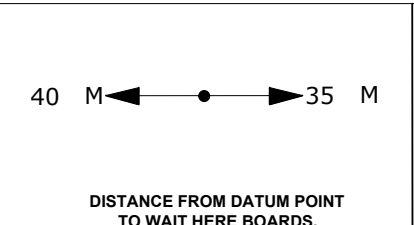
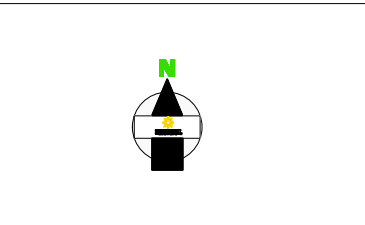
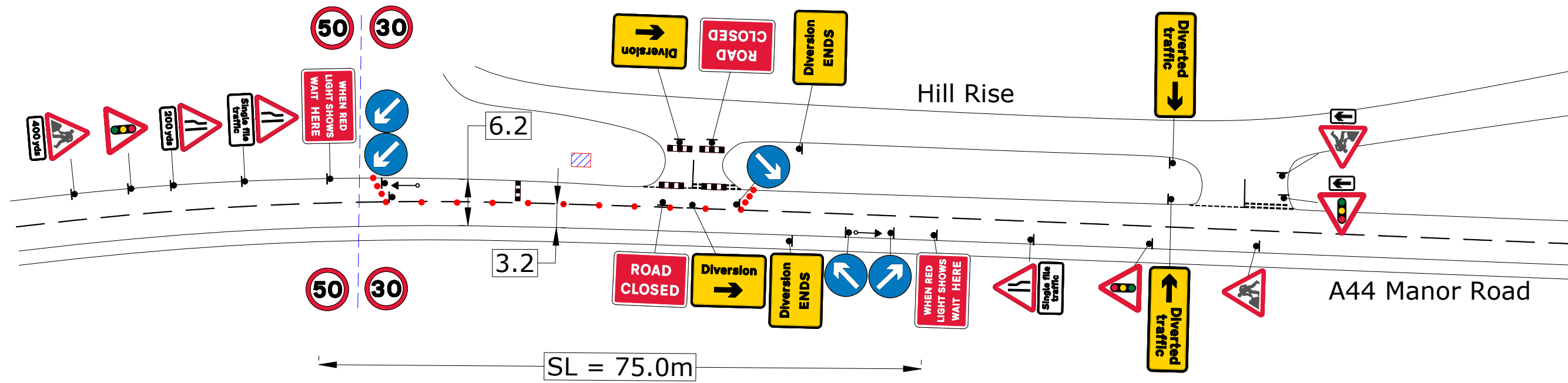
Client: Openreach	
Contract No	213-S011690
Date	29/06/2022
Drawn by	NB/213
Approved By	NB/213
Purpose of works	Telecomms
DWG Version No	001
Amended by	XXXXXXXXXX
Amendment Date	XXXXXXXXXX
Scale	NOT TO SCALE
Sheet No	1 of 1

SPEED OF ROAD	30	MPH
DISTANCE FROM FIRST SIGN TO START OF SITE(D)	MIN	20 M
	MAX	45 M
SIDEWAYS SAFETY ZONE (S)	0.5 M	
LONGWAYS CLEARANCE (L)	0.5 M	
OS Licence No	OI - 0000000000	

KEY

- Traffic sign
- Traffic cone
- No Parking cone
- Temp Traffic signals
- Temp Ped Crossing
- Working Space
- Controlled area
- Pedestrian Barrier
- Perm signal head
- Bus Stop

PHASE 1		PHASE 2	
GO →		← GO	
R	10	R	10
G	40	G	40



The information in this drawing may not be copied or used by third parties without written consent from Sunbelt Rentals Ltd (Traffic Management). This layout is for installation by NRSWA, Lantra 12A,12B,12C,12D qualified persons.
All works shall be in accordance with Safety at Street Works and Road Works, A Code of Practice 2013 & Chapter 8

THIS DOCUMENT IS UNCONTROLLED WHEN PRINTED
The electronic version of this document is the approved and most current. Any printed version is uncontrolled and may not be current.